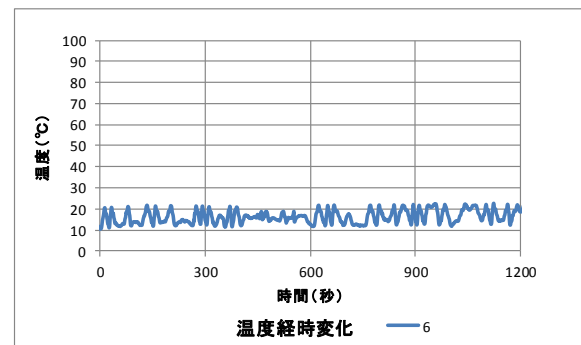
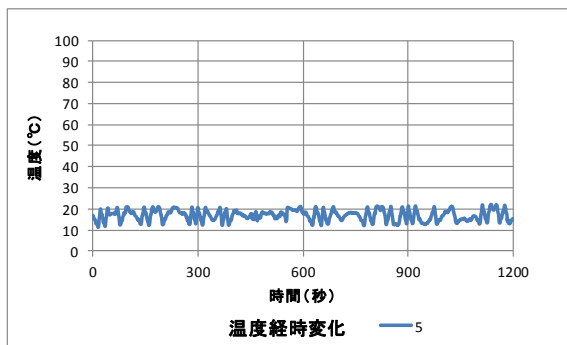
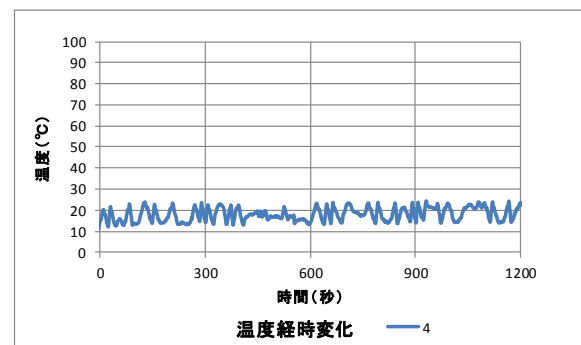
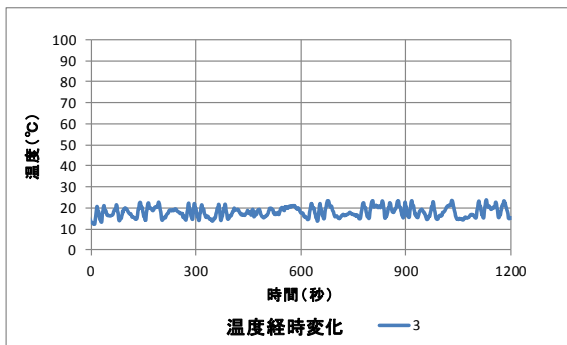
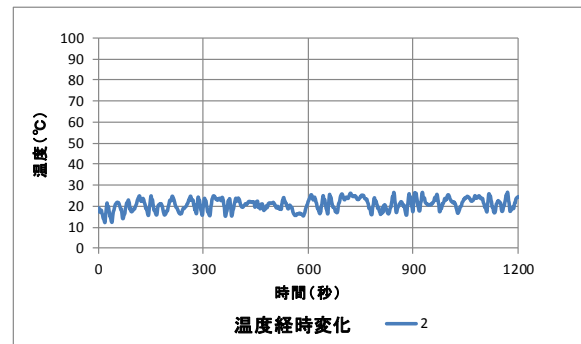
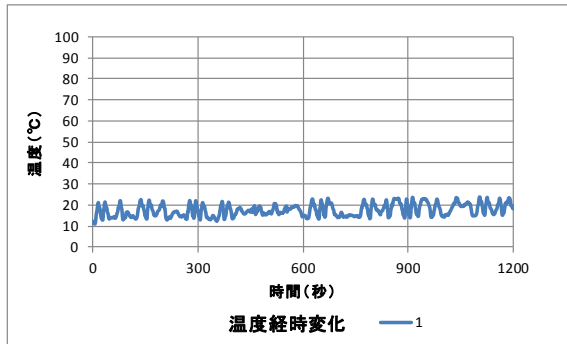


資料 2 熱電対と熱流束データの経時変化

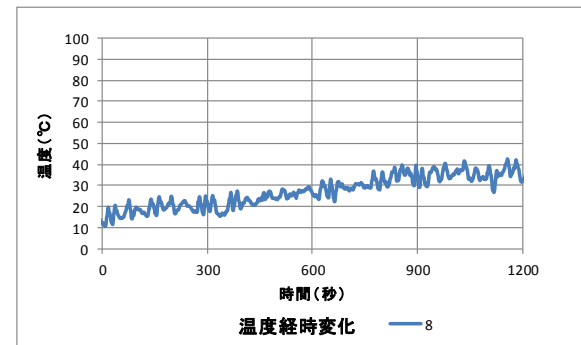
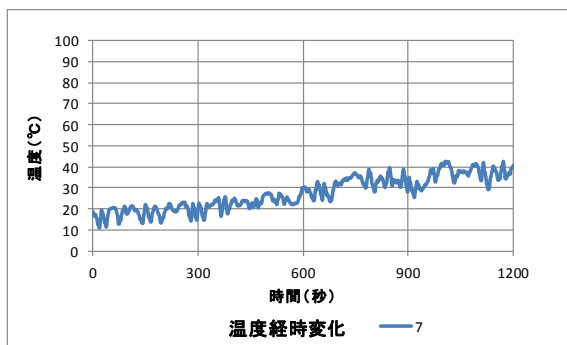
1. 熱電対データ

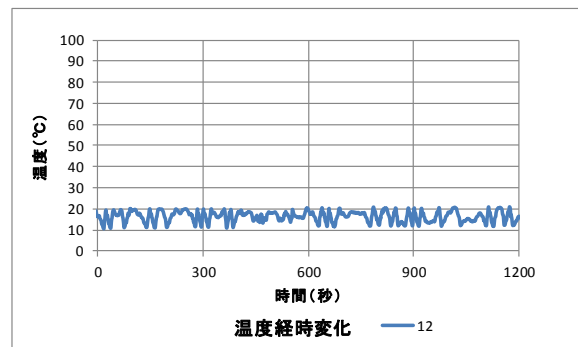
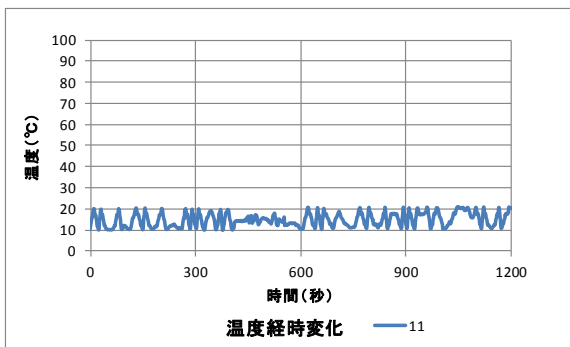
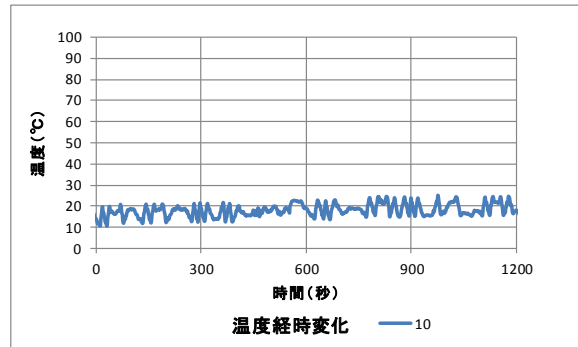
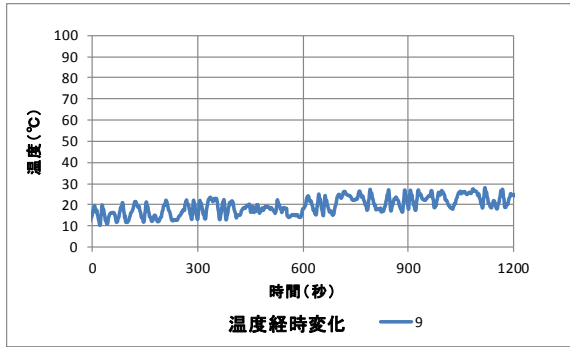
<筐体周囲>

正面側 1~6

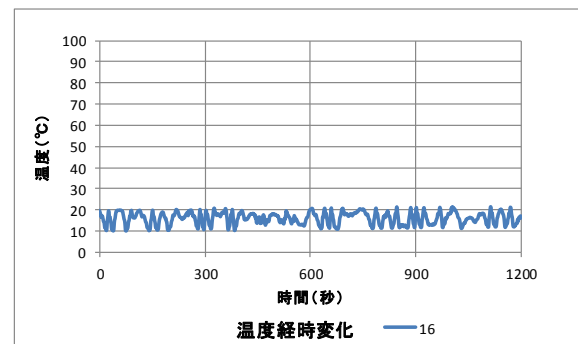
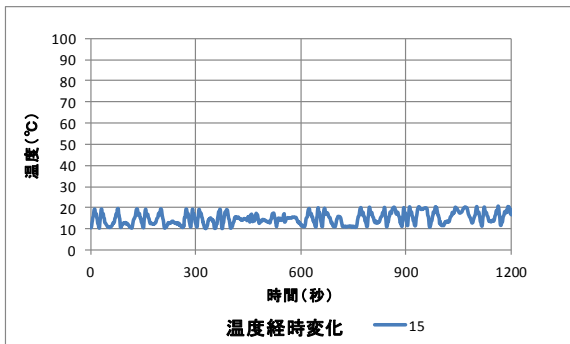
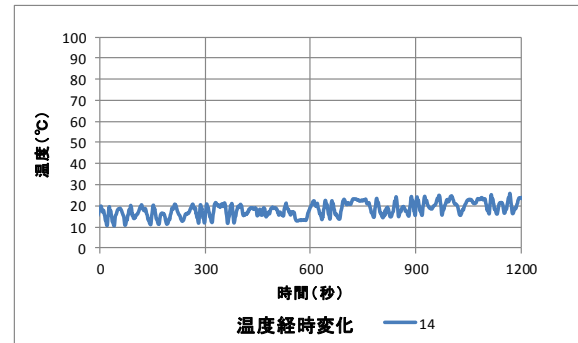
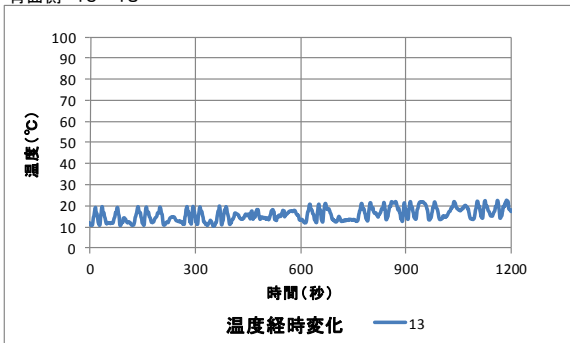


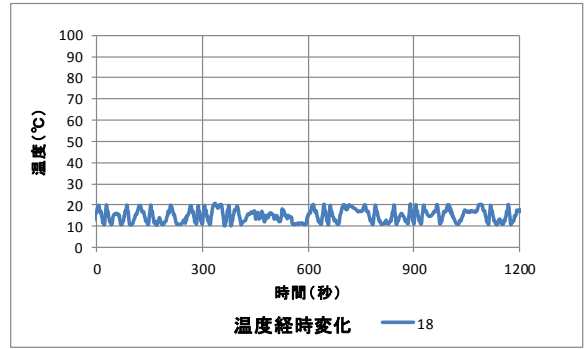
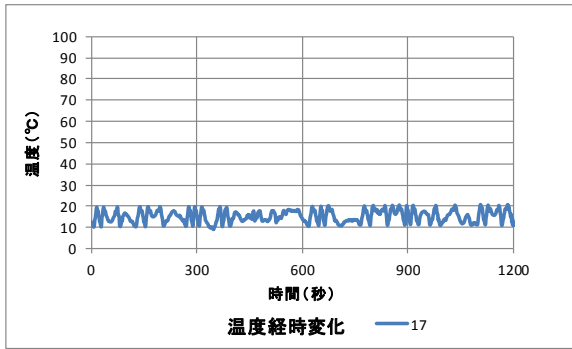
排気側 7~12





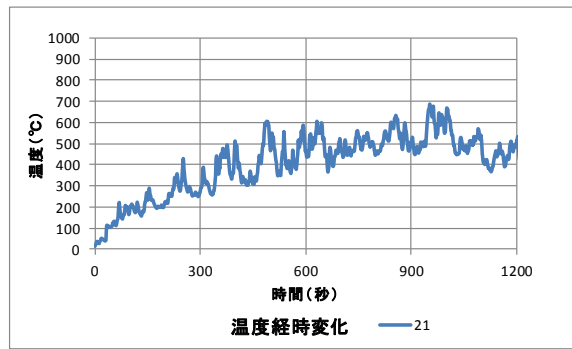
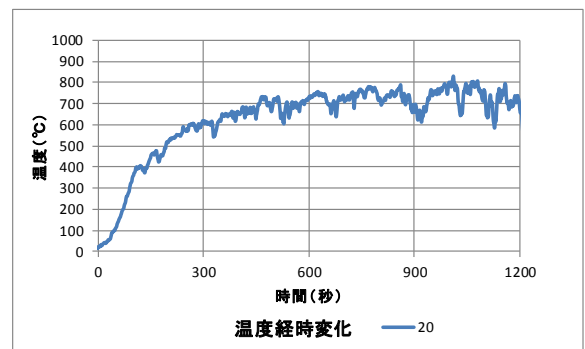
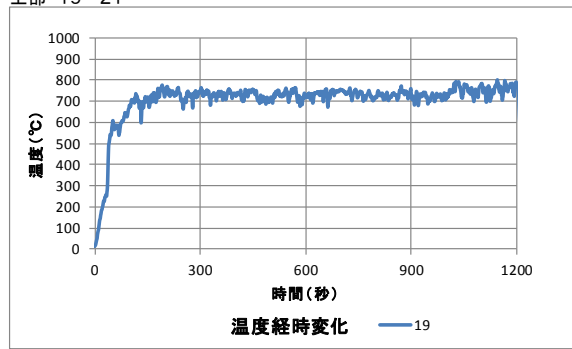
背面側 13~18



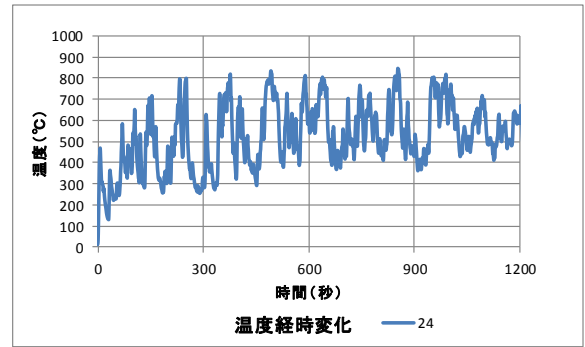
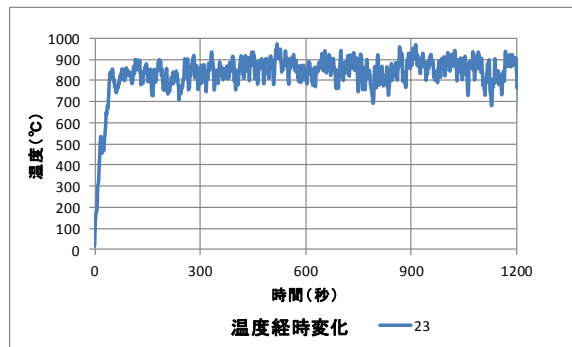
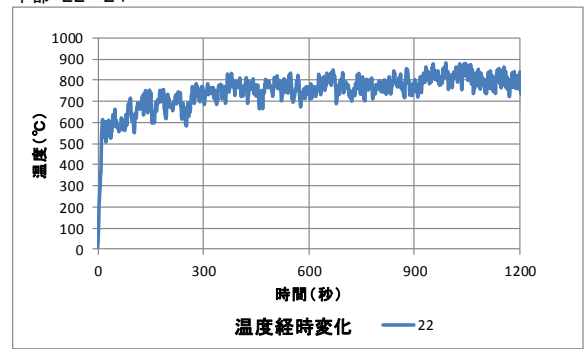


<吸気側外部側板>

上部 19~21

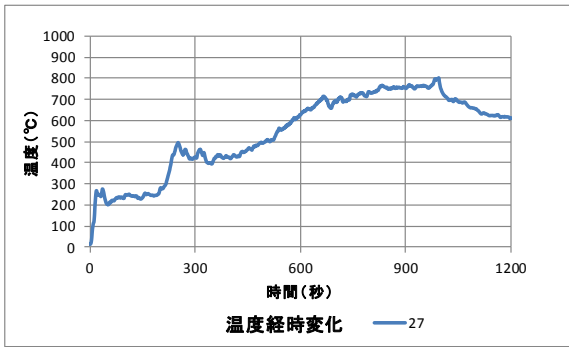
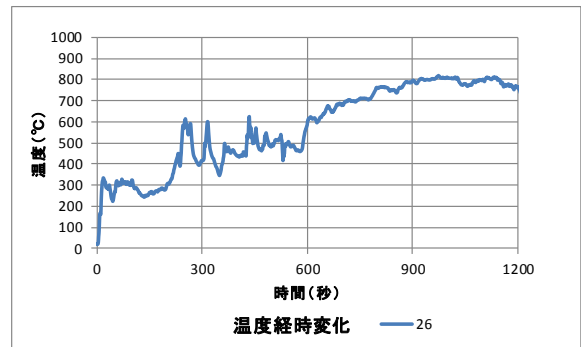
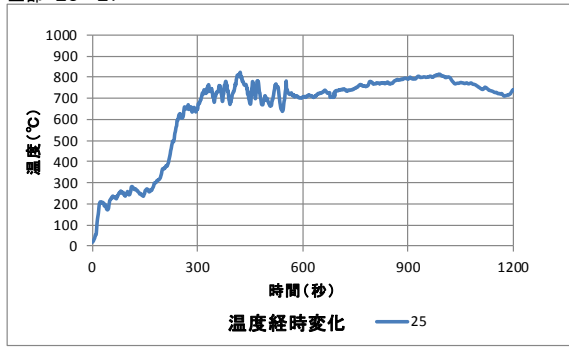


下部 22~24

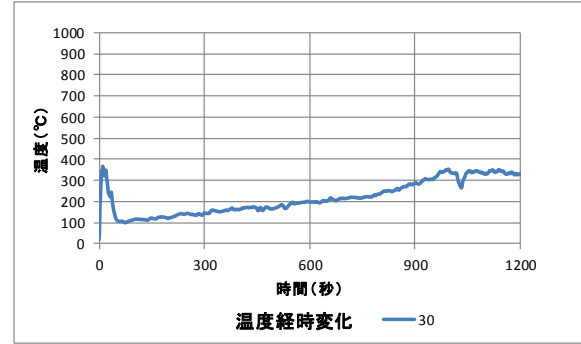
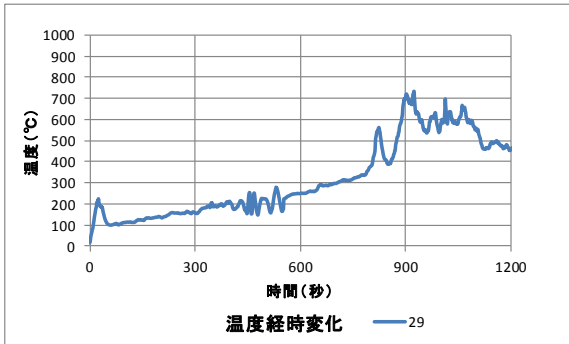
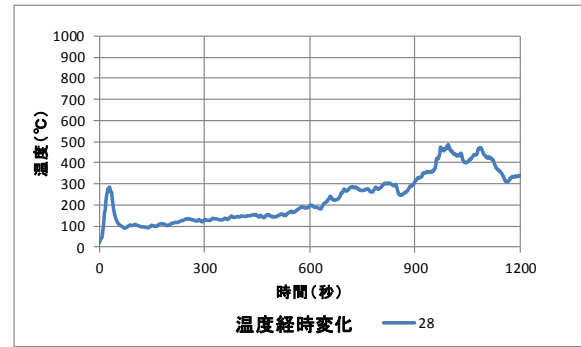


<吸気側側面内部>

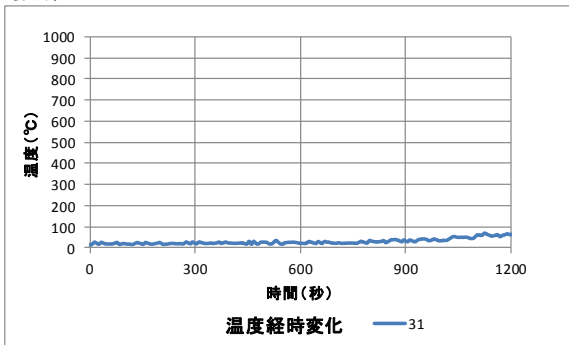
上部 25~27



下部 28~30

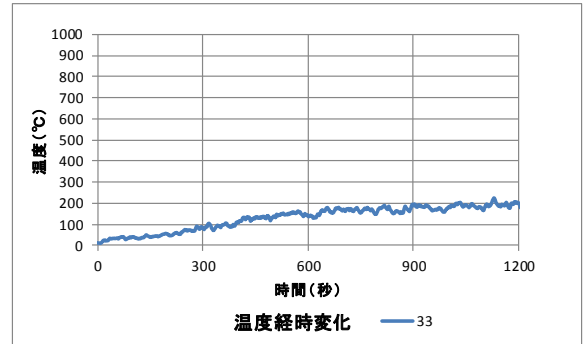
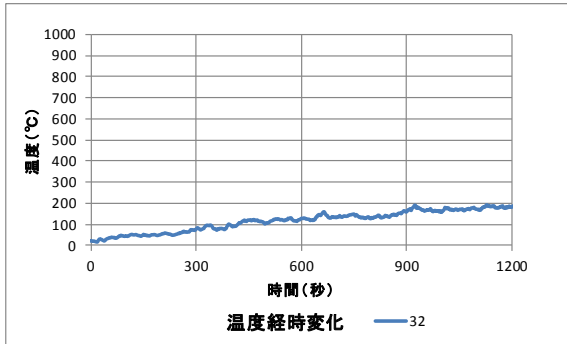


最下部 31

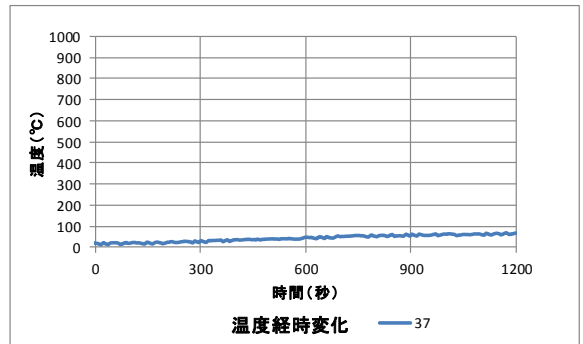
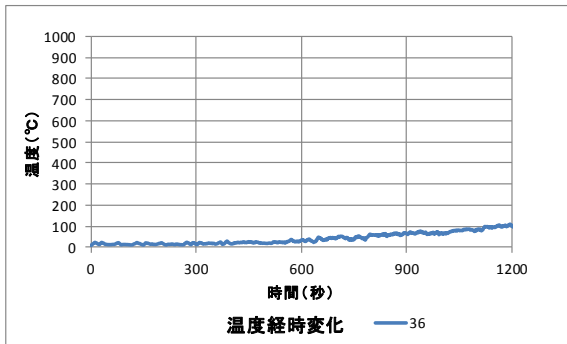
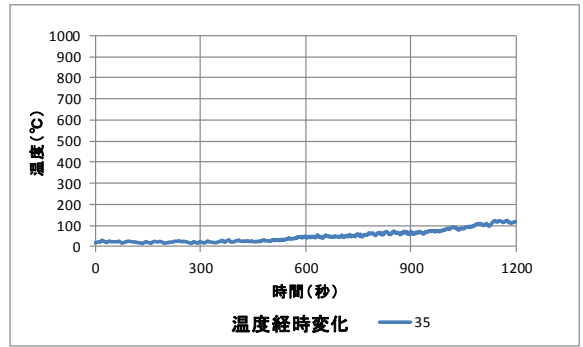
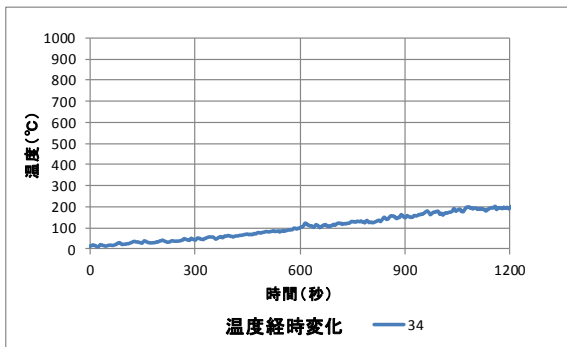


<排気側外部側板>

上部 32~34

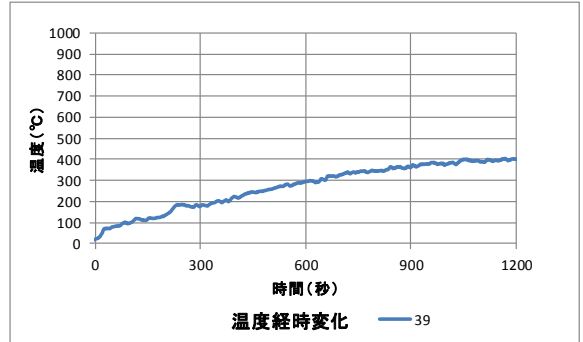
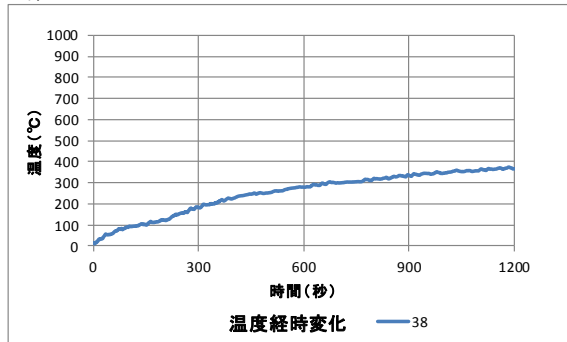


下部 35~37

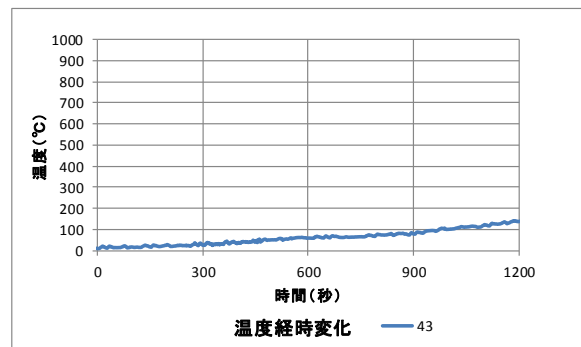
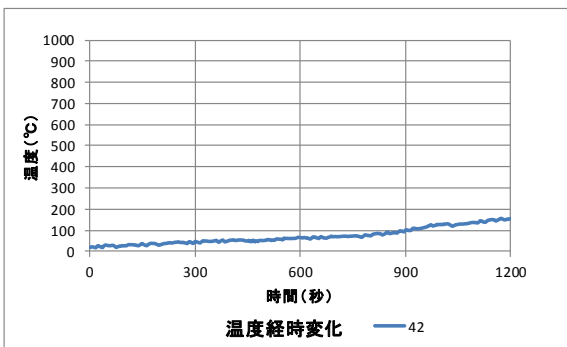
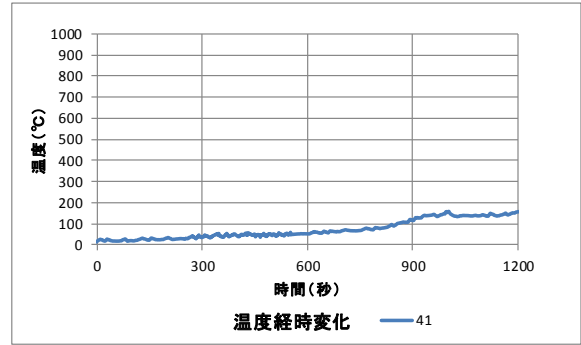
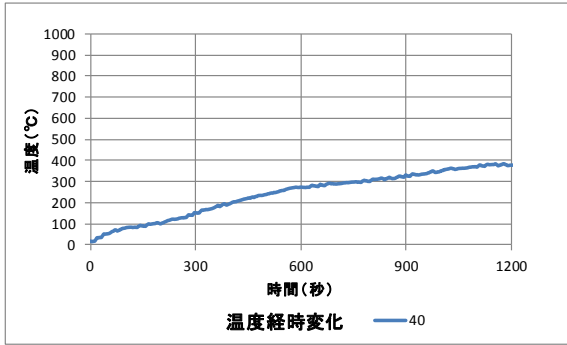


<排気側側面内部>

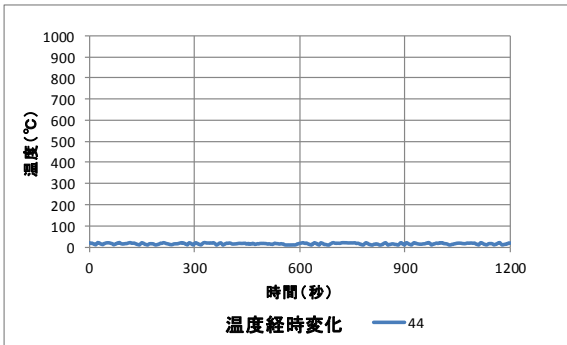
上部 38~40



下部 41~43

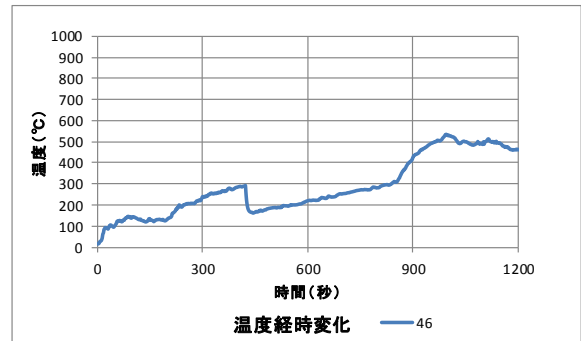
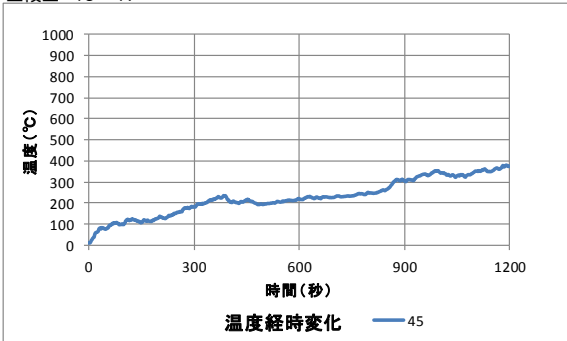


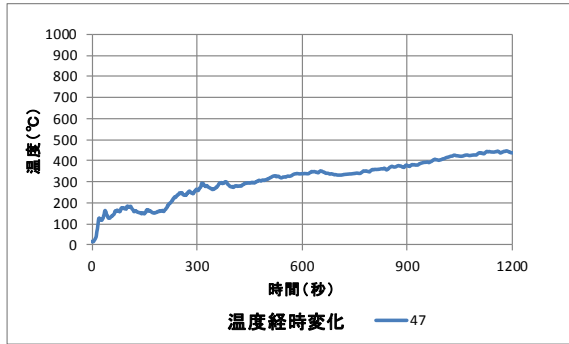
最下部 44



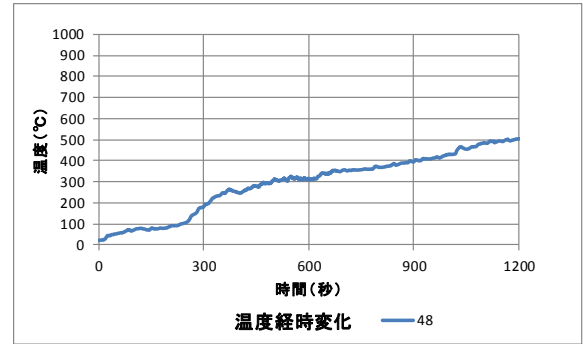
< 筒体内部 >

上段上 45~47

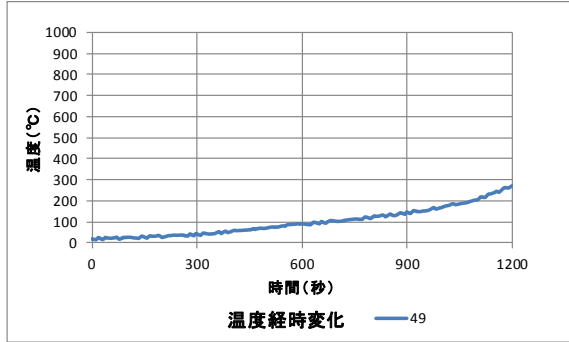




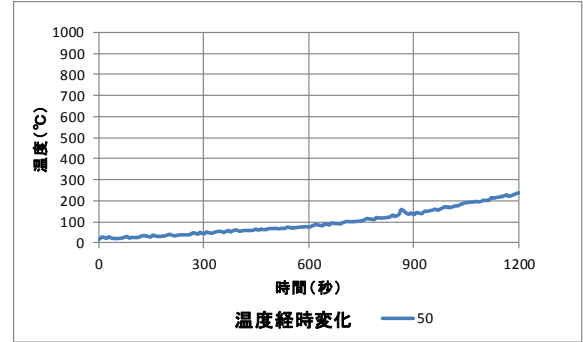
上段横 48



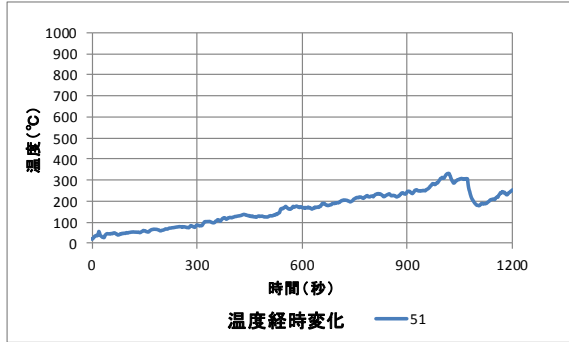
上段下 49



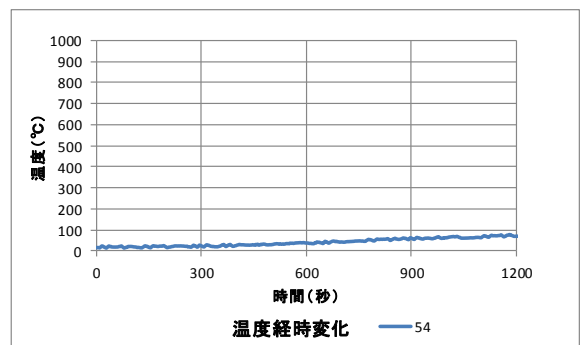
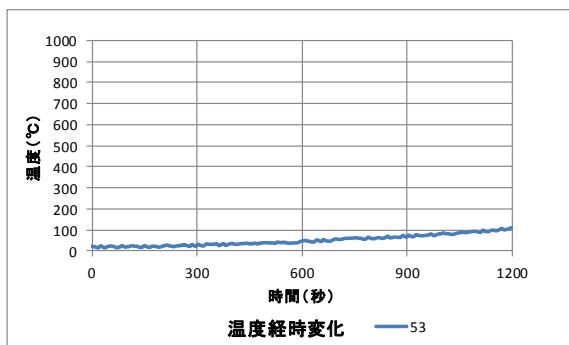
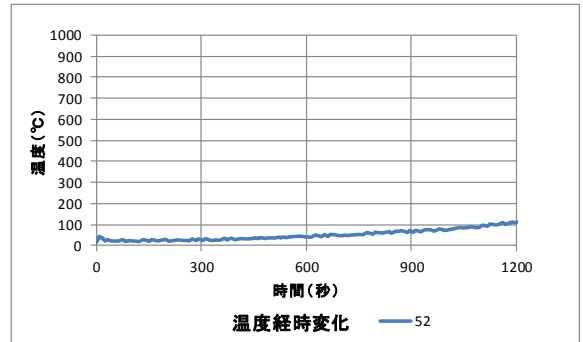
下段上 50



下段横 51



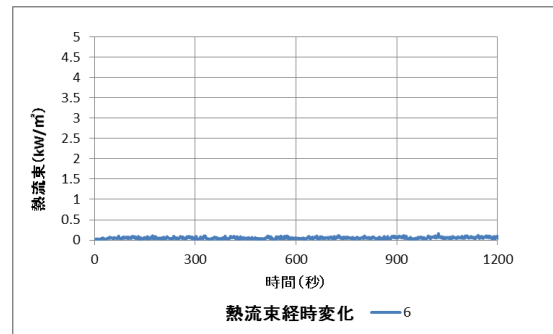
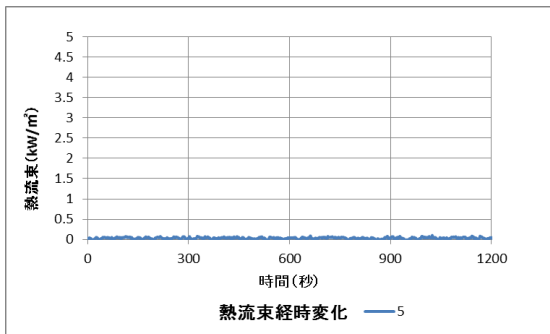
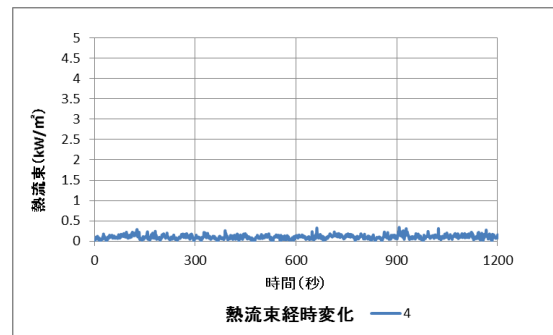
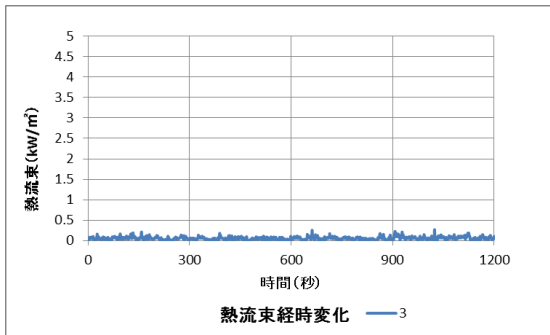
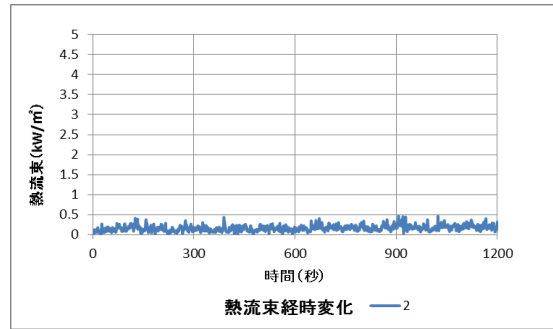
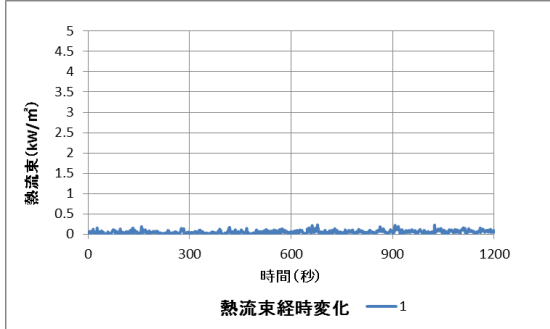
下段下 52~54



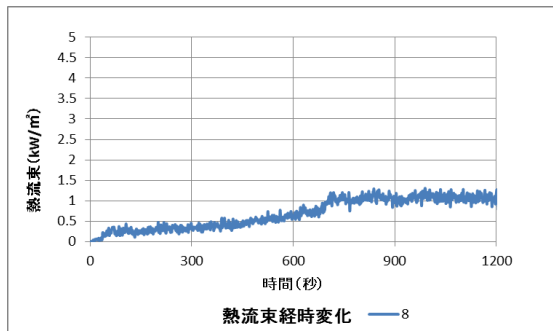
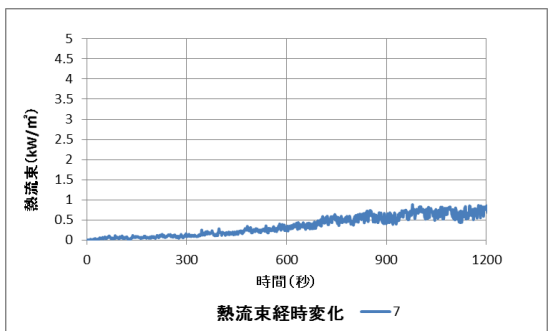
2. 熱流束計グラフ

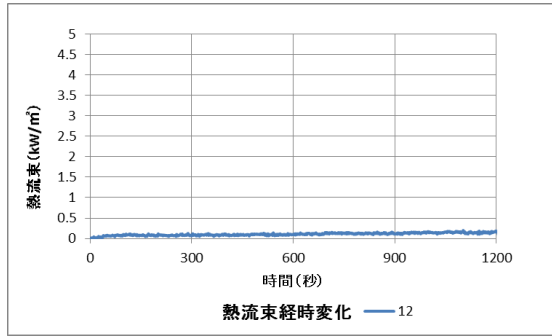
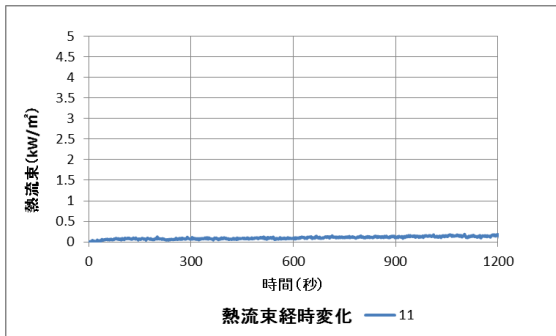
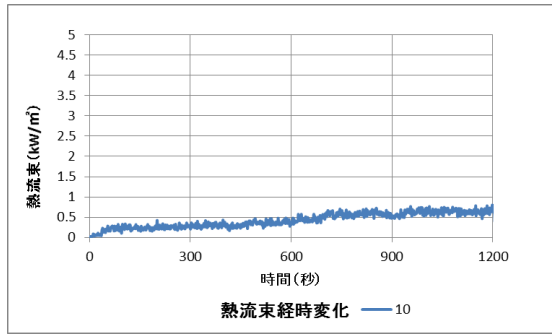
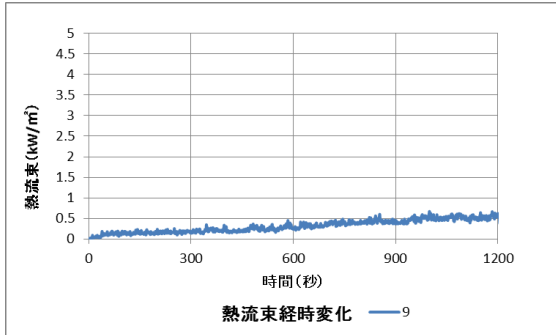
< 筐体周囲 >

正面側 1~6



排気側 7~12





背面側 13~18

